

# Entity Enterprise Community Garden Ripple Effect Map

The Entity Enterprise community created this map of the changes sparked by the community garden in it's first year! It was a collaborative effort between community members and UNC researchers to uncover the impact of the garden and the relationships created along the way.

## COMMUNITY CAPITALS FRAMEWORK

<b>BUILT</b>	Infrastructure that supports the community	<b>SOCIAL</b>	Connections or bonds between individuals within a community
<b>POLITICAL</b>	Ability to influence local policy, standards, and law	<b>CULTURAL</b>	Collaboration across and within cultures; it influences what voices are the loudest and most heard
<b>NATURAL</b>	Natural amenities and the environment, wildlife and natural beauty	<b>HUMAN</b>	Skills and abilities of residents and the capacity to address outside resources
<b>FINANCIAL</b>	Resources required to start businesses, invest in community spaces, support entrepreneurship and build wealth		

## RIPPLE EFFECT MAPPING

What are people doing differently?

1

Who is benefitting and how?

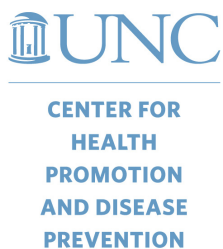
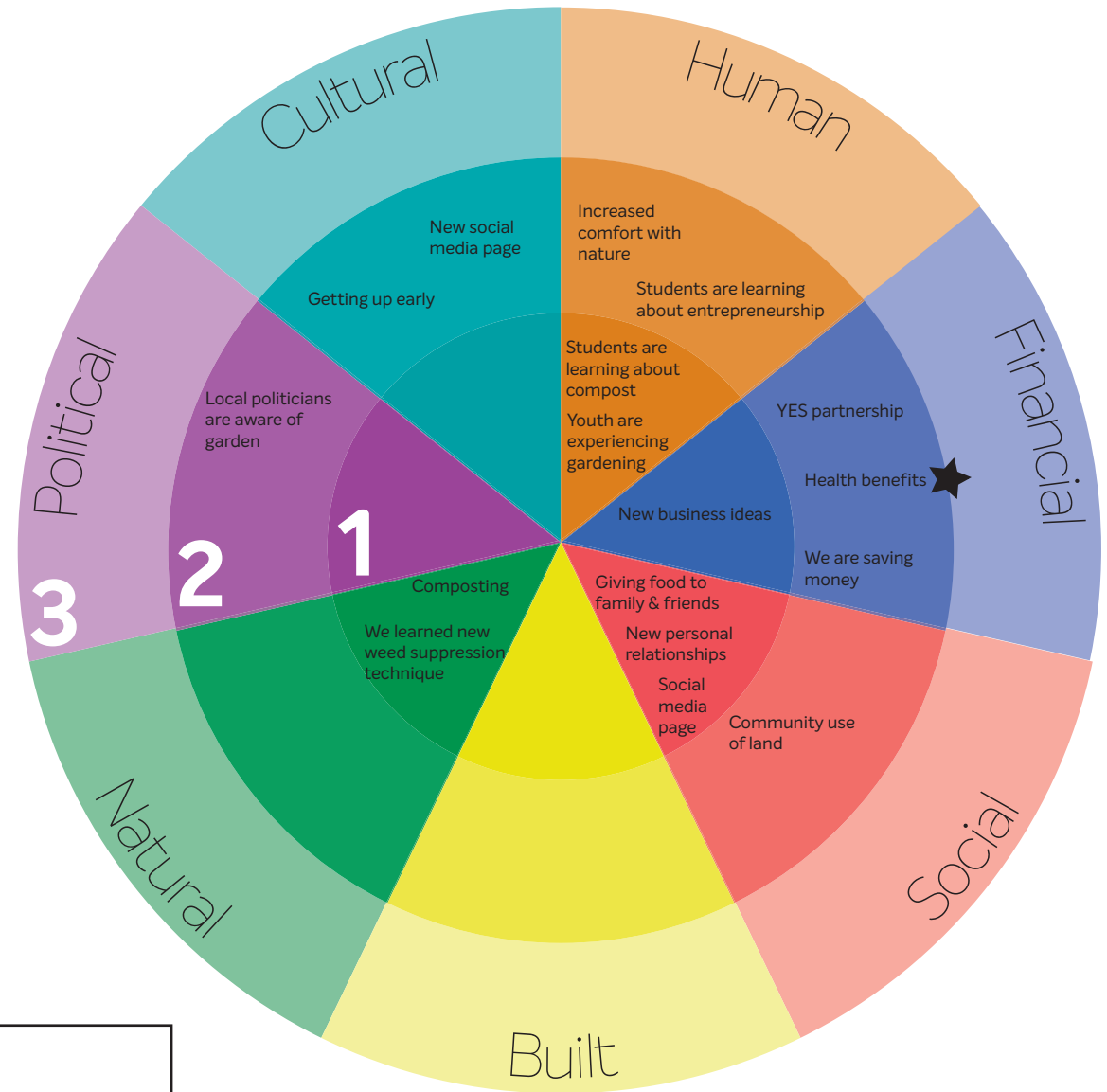
How is the fact that people are doing things differently affecting others?

2

What changes are you seeing in the community's systems, institutions or organizations?

Are everyday ways of thinking and doing changing? How?

3



Legend:



The community identified this effect as the most important

Map created in partnership with the Entity Enterprise community on August 20th, 2019.

This material was funded by USDA's Supplemental Nutrition Assistance Program - SNAP.

This institution is an equal opportunity provider.